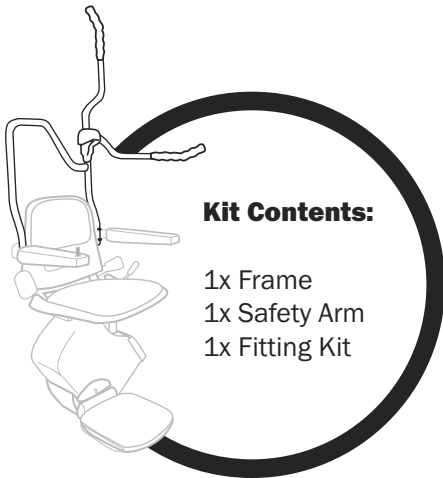
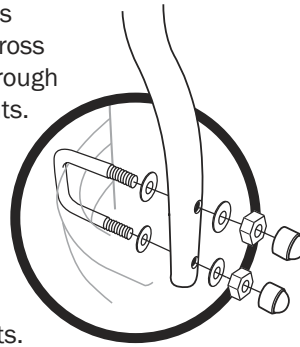


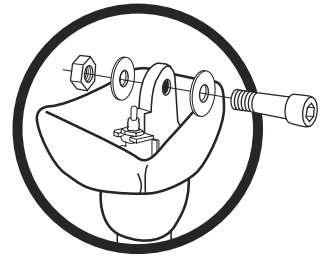
Sit / Stand Frame Instructions



1. Place the 'U' bolts around the seat-arm cross member and insert through the holes in the uprights. Fasten the 'U' bolts in place using the 1/2" nuts and tighten securely.

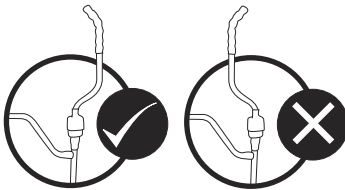


2. Remove the nut, bolt and spacer from the frame.

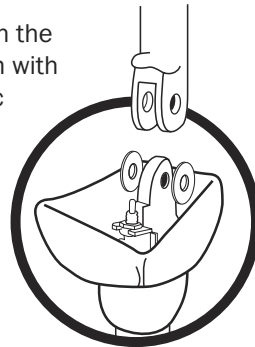


Place the rubber protectors over the nuts.

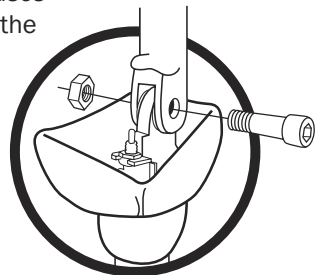
3. The safety arm should be installed with the bend facing away from the stairway.



4. Attach the safety arm with the plastic spacer located between the arm and the frame.



5. Tighten the nut and bolt so it causes friction between the safety arm and frame whilst still allowing the arm to be moved up and down.

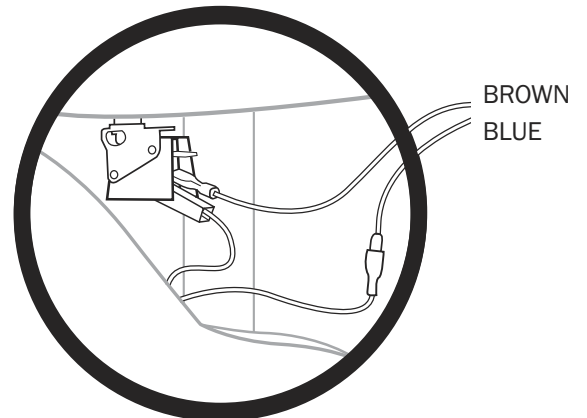


6. Slide the two rubber covers together so they cover the joint.



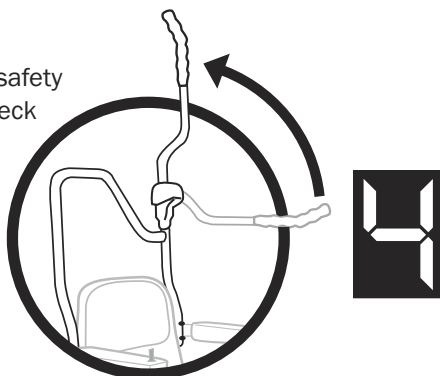
7. Remove one of the white leads from the seat swivel switch (located on the seat post) and connect to one of the leads from the sit/stand frame.

Connect the other lead from the sit/stand frame back to the seat switch



NB The top terminal should be empty.

8. Move the safety arm up and check that the digital display on the carriage reads **4**.



9. Move the safety arm down and check that the digital display on the carriage reads **1**.

The lift will only operate with the safety arm down.

